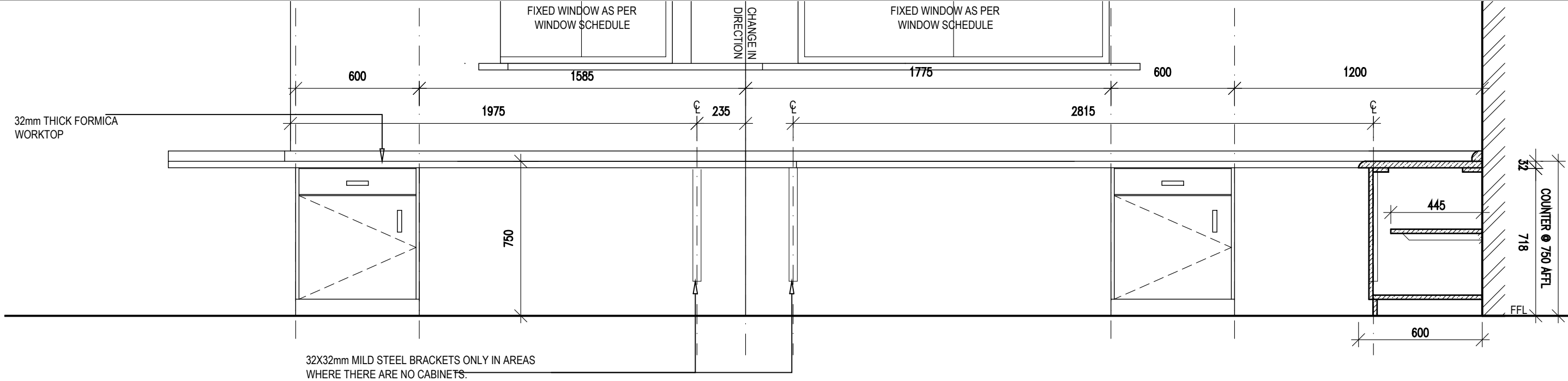
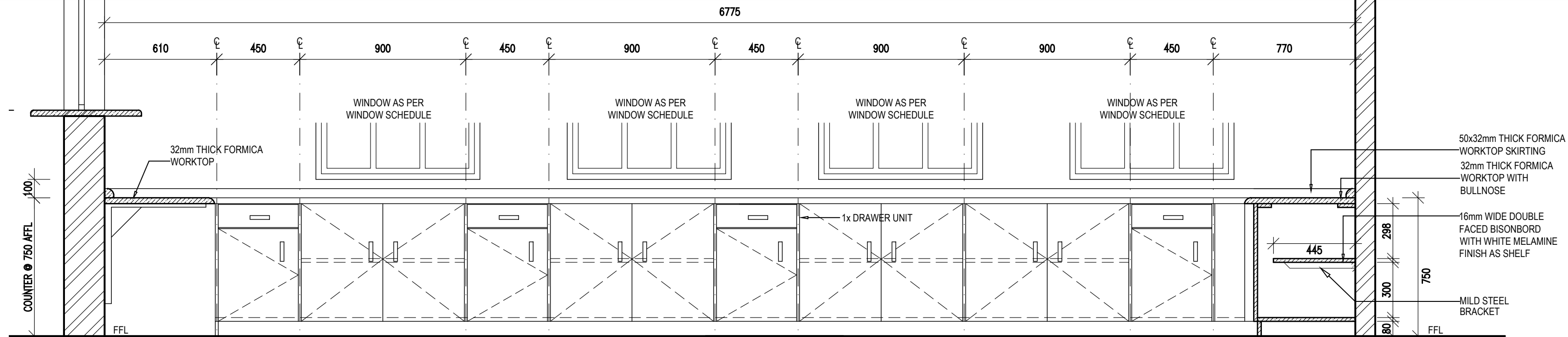


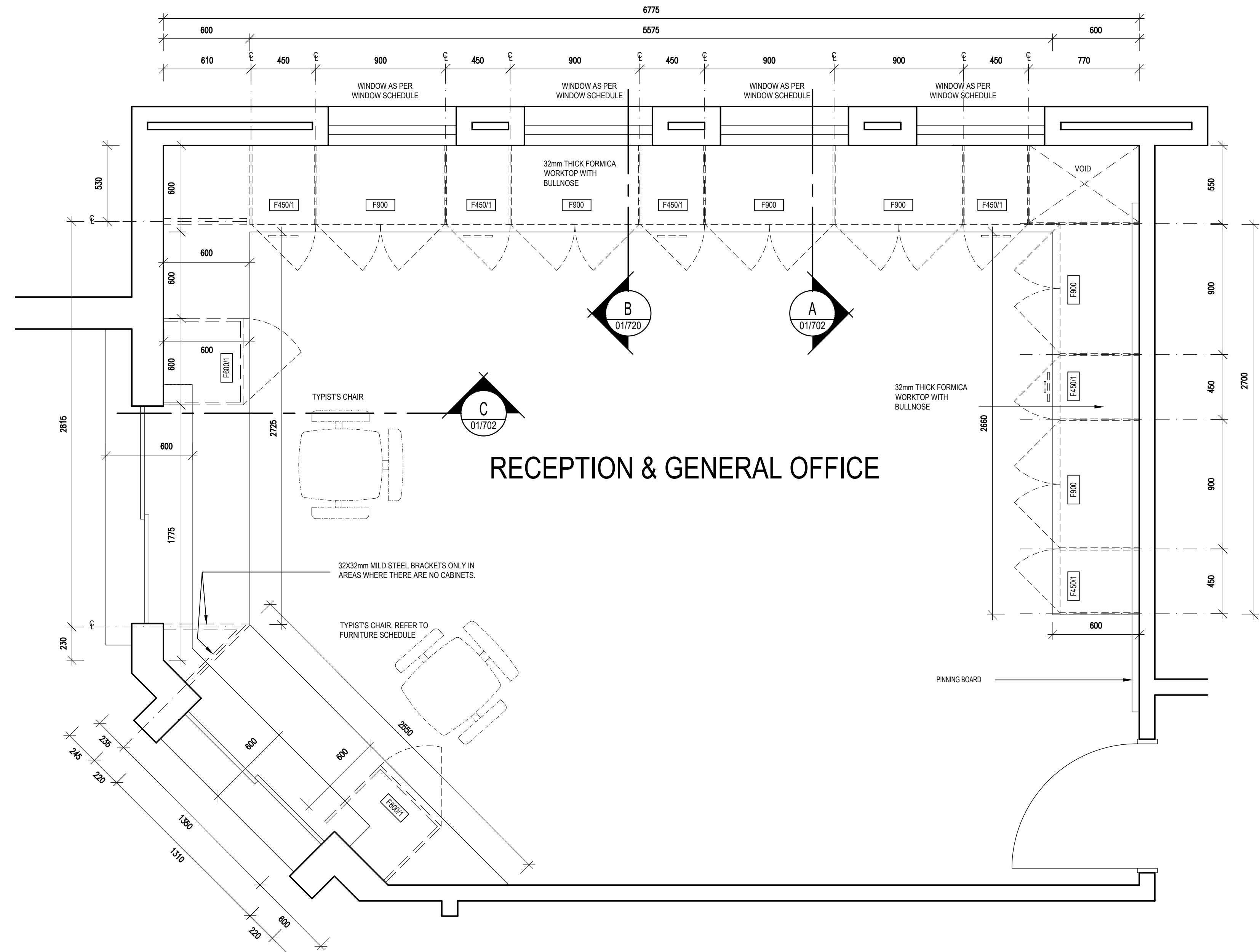
DETAIL 05.2: RECEPTION & GENERAL OFFICE- SECTIONAL ELEVATION A SCALE 1:20



DETAIL 05.3: RECEPTION & GENERAL OFFICE- SECTIONAL ELEVATION B SCALE 1:20



DETAIL 05.4: RECEPTION & GENERAL OFFICE- SECTIONAL ELEVATION C SCALE 1:20



DETAIL 05.1: RECEPTION & GENERAL OFFICE- FLOOR LAYOUT SCALE 1:20

GENERAL SPECIFICATIONS:

SHELVING

ADJUSTABLE SHELVING

WALL BANDS:
POWDER COATED MILD STEEL WALL BAND
HEIGHTS AS INDICATED ON PLANS @ MAX
600mm DC
STEEL BRACKETS:
POWDER COATED MILD STEEL
BRACKETS 300mm
SHELVING:
16mm THICK x 300mm WIDE LAMINATED S.A.
PINE LENGTHS ACCORDING TO DETAIL
LAYOUT
MODULAR STEEL SHELVING:
STEEL SHELVES AND SLOTTED STEEL
ANGLE POSTS AND CROSS BRACES ON
SIDES

WALL AND FLOOR UNITS

CUPBOARD (IRONMONGERY) NOTE:
CUPBOARD DOOR HINGES: - TO BE FGV
CLICK-ON 110° 15mm CRANK HINGE TO BE
SCREW FIXED (PRODUCT CODE
51MSX5051000 AS PER "ROCO" CATALOGUE
10) 1xPAIR PER DOOR
DOORS & DRAWER HANDLES: - TO BE 100mm
LONG ALUMINIUM D HANDLE (PRODUCT
CODE RAH442 AS PER "ROCO" CATALOGUE
10) 1x HANDLE PER DOOR/DRAWER
DOOR LOCKS: - TO BE 19x22mm MORTICE
LOCK (PRODUCT CODE VLC1736 - NICKEL)

CUPBOARD SPEC NOTE:
CUPBOARD CARCASSES TO BE 16mm
DOUBLE FACED BISONBOARD WITH WHITE
MELAMINE FINISH
CUPBOARD DOORS TO BE 16mm DOUBLE
FACED BISONBOARD WITH WHITE MELAMINE
FINISH, SQUARE EDGED WITH 3mm WHITE
PVC EDGING ALL ROUND
COUNTER TOPS TO BE 32mm THICK
FORMICA WORK TOPS
COUNTER TOPS TO HAVE 50mm HIGH
FORMICA SKIRTINGS

ALL SALICINA BOARDERS TO BE SLIGHTLY
ROUNDED, THOROUGHLY SANDED AND
VANISHED WITH 2 COATS CLEAR PLASCON
VARNISH

WORKSHOP DRAWINGS TO BE SUBMITTED
TO ARCHITECT BEFORE ANY WORK
COMMENCES

NO.	DATE	REVISION	DRAWN
A	2021-03-01	ISSUED FOR INFORMATION	DW
B	2022-07-08 2022-04-13	ISSUED FOR MEASURE ISSUED FOR INFORMATION (EPMS) 1. DWG NO. CHANGED FROM 1617 TO 2204	DW

ISSUED FOR
APPROVAL

KEY



PSP

ARCHITECT



ARCHITECTURAL PROFESSIONAL SACAP NUMBERS:

H.L. MANTEL SACAP 3045

IMPLEMENTED BY

INDEPENDENT
DEVELOPMENT
TRUST

SIGNATURE	DATE	SHEET NO.
DESIGNED		A1
DRAWN	SG	SCALE
VERIFIED	-	1:100
VALIDATED	-	STATUS LISTING
		I = INFORMATION
		FA = FOR APPROVAL
		T = TENDER
		C = CONSTRUCTION
		AB = AS BUILT

CLIENT	IMPLEMENTING AGENT

PROJECT
DOE PORTFOLIO PROGRAMME
ESTABLISHMENT OF NEW SCHOOLS
HILLBROW - SENIOR SECONDARY SCHOOL
PROVINCE: EASTERN CAPE PROVINCE
DRAWING TITLE
ADMINISTRATION (LARGE) (BLOCK S-A)
JOINERY DETAILS PART 3 OF 5
RECEPTION AND GENERAL OFFICE

DRAWING DESCRIPTION
ADM1-D

EMIS NUMBER	DISCIPLINE	DRAWING NUMBER	STATUS	REVISION
200500293	ARCH	2204 w07-01/702	FA	B